



A LIFE-CHANGING BOTSWANA EXPERIENCE



## MODULO

THE LUXURIOUS ACCOMODATION AT LIMPOPO-LIMPADI

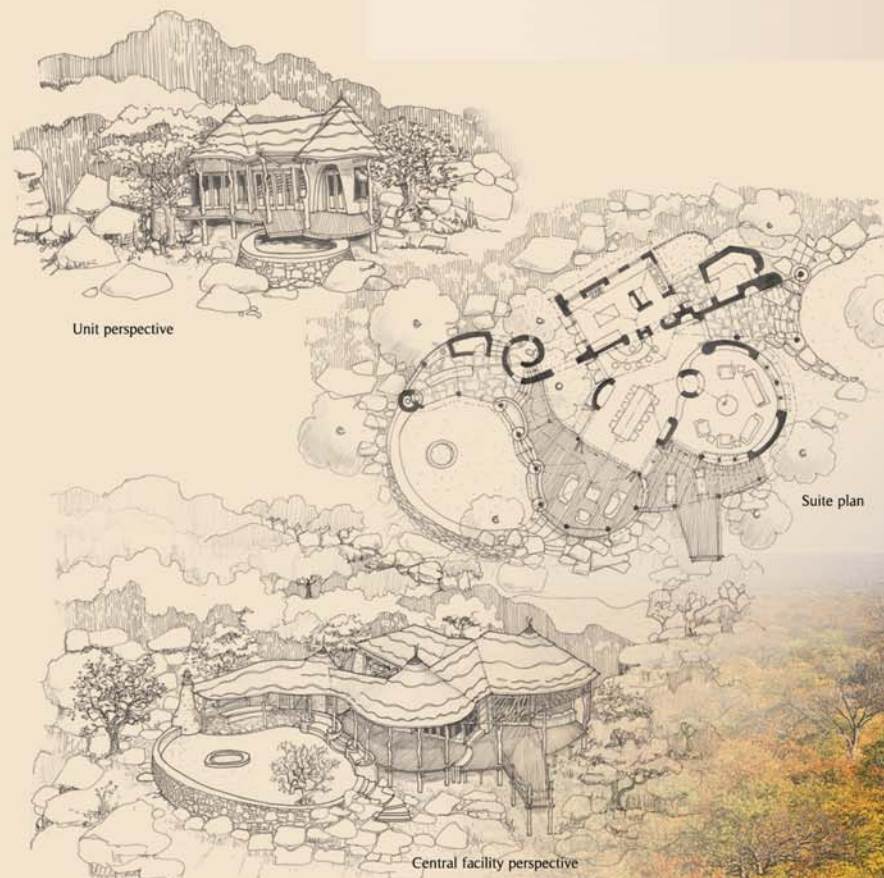
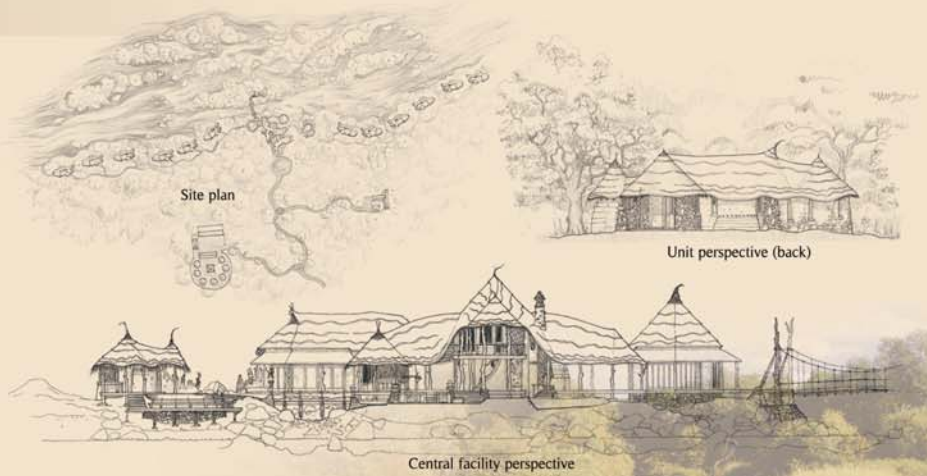
THE ULTIMATE AFRICAN WILDERNESS

## ISLAND LODGE

The feeling of being stranded in an unexplored world- what adventure lies ahead? This is the concept for Island Lodge.

Pieces of driftwood will be skillfully crafted by the locals to create interesting and creative features in the units, bringing the outdoors in and allowing each element of design to add to the feeling of being on an exciting journey.

With its weathered/ sun bleached colours, and its polished driftwood furniture, this rustic yet sophisticated look will allow you, the shareholder, the experience of being marooned in absolute luxury.



## LIPADI ROCK LODGE

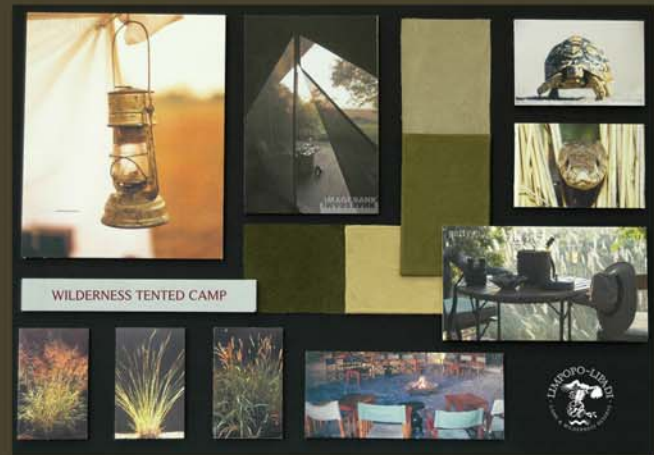
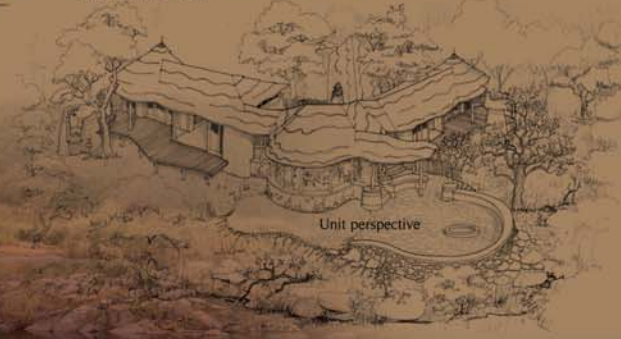
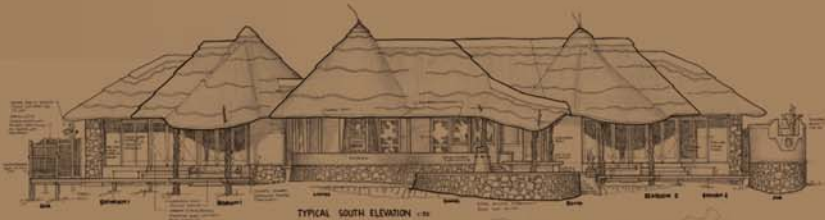
A Black eagle swoops by, and its sense of power is felt as it lands on its nest. Its nest acts as a contrasting background to this dominant being. Unknowingly, the eagle has nested in an area of great historical interest.

The natural environment and the cultural history both form the foundation of the concept for the interiors. The colour palette reflects the surrounding rocks, and local artisans will recall the fascinating cultural history of the area in their artworks.



# RIVER CAMP

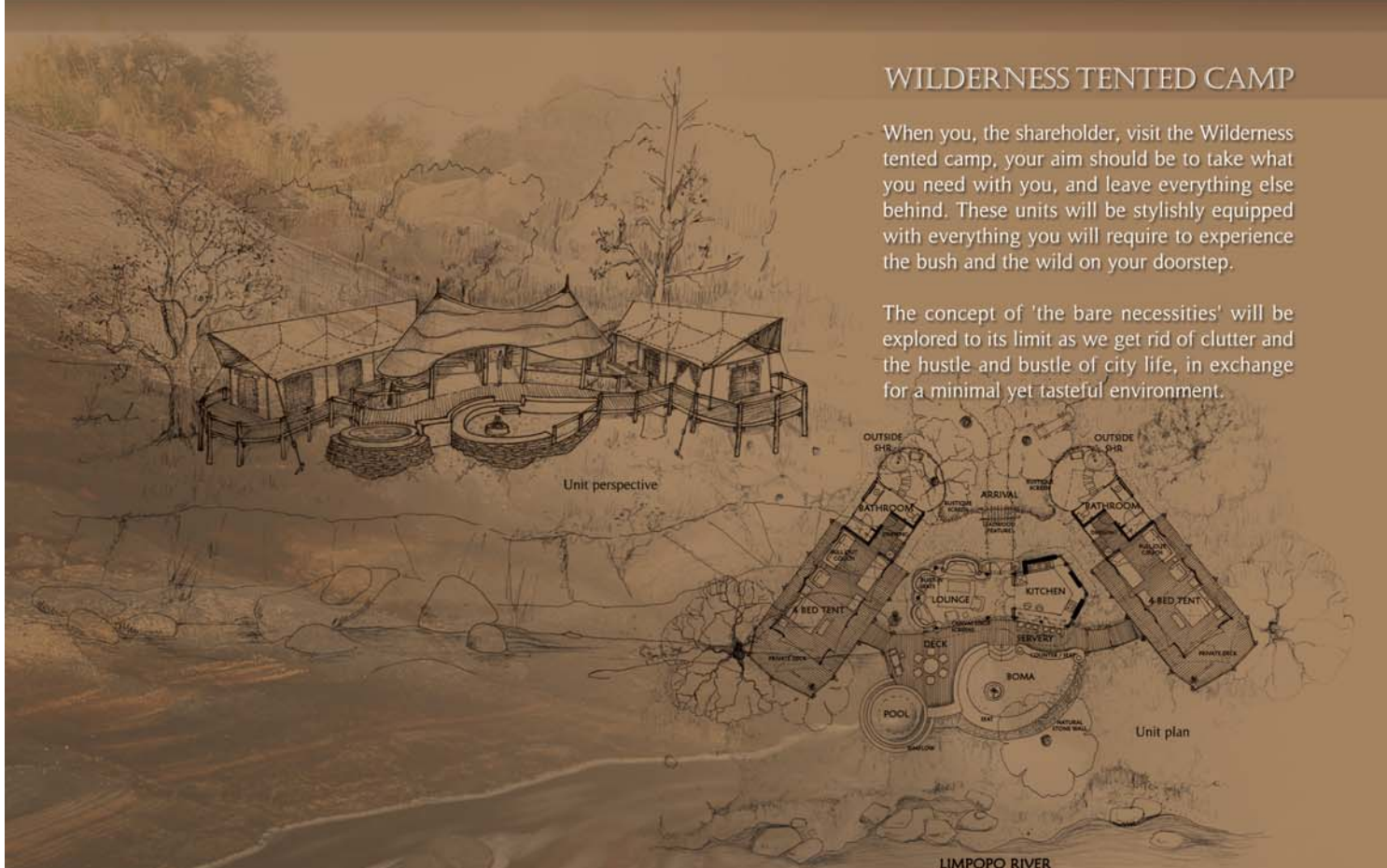
By combining the concept of camping with rustic industrial design, a unique environment will be created. A successful blend of Canvas, Rusted metals, and copper details will be used in contrast to the cool environment created by the river. The Striking blue and dramatic black of the woodlands kingfisher will be incorporated into the colour scheme of browns, grays, and neutral creams. The modern design approach will be softened with hints of African arts and nature, when the Local craftsmen's items are incorporated into the overall finishes.



# WILDERNESS TENTED CAMP

When you, the shareholder, visit the Wilderness tented camp, your aim should be to take what you need with you, and leave everything else behind. These units will be stylishly equipped with everything you will require to experience the bush and the wild on your doorstep.

The concept of 'the bare necessities' will be explored to its limit as we get rid of clutter and the hustle and bustle of city life, in exchange for a minimal yet tasteful environment.

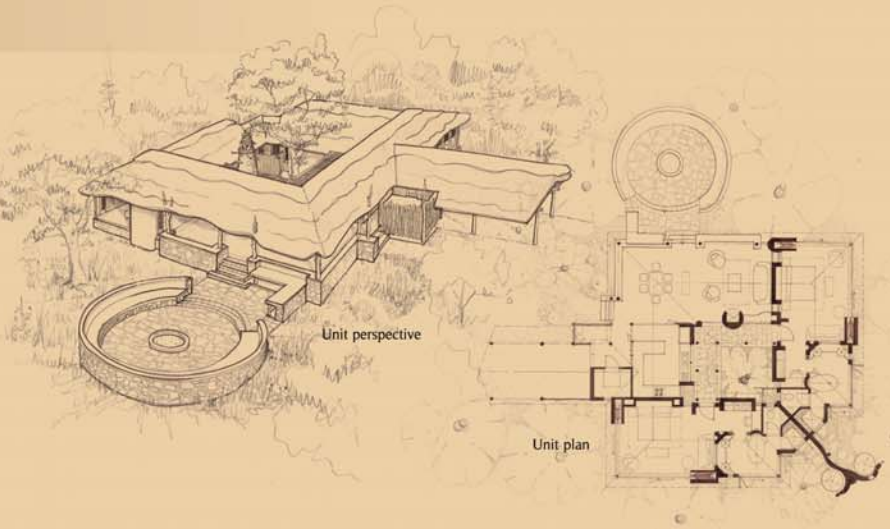


LIMPOPO RIVER

## KIRKIA CAMP

Surrounded by Wild Seringa and Marula trees, the spirit and serenity of the environment of this camp will be reflected in the design of the interiors. The bright green colour of the leaves in summer, and the intense yellow of the leaves in autumn are toned down as they join the colour palette.

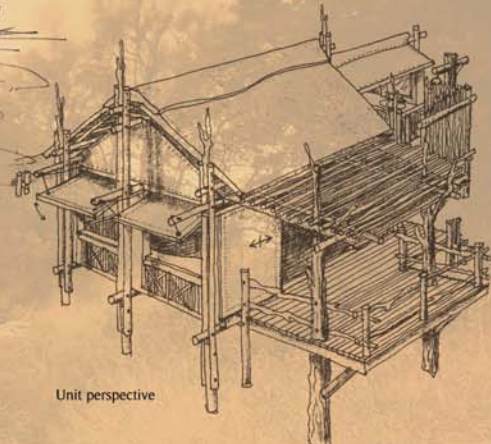
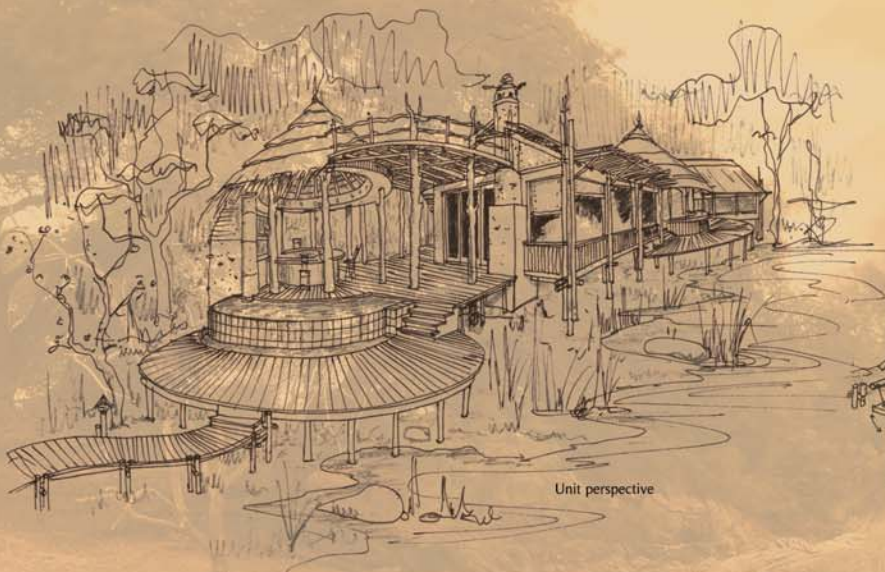
The design of the interiors will be inspired by the neighboring trees, and a lot of reference will be made to timber. The comfortable 'farm-house' look will be adopted, allowing you, the shareholder, to enjoy the luxury of some peace and quiet. Once again local craftsmen will be employed to create interesting artworks to be incorporated into the design.



## MOGOROSI TENTED CAMP

Situated at a water hole, this is the ideal lodge to explore the history of the European hunters. As if being on an African safari, the interiors will reflect wealth and a feeling of travel.

Neutral colours such as light browns, off whites and mustards will enhance the sophisticated look, while reference will be made to old hunting photos and diary pages.





A LIFE-CHANGING BOTSWANA EXPERIENCE



Shareholders can decide on the wilderness experience they want by staying in any of the two luxury lodges or four bush camps in the Reserve - thus a river, mountain or central wilderness experience.

The lodges and camps are designed by a leading lodge architect and are unrivalled in design, luxury, aesthetics, location, environmental sensitivity and integration into the African experience. The result: a unique bush experience for the sole use of the shareholders or their nominees. No public access!



THE ULTIMATE AFRICAN WILDERNESS

A LIFE-CHANGING BOTSWANA EXPERIENCE



Office : +27 12 329 2699

Mobile : Johannes Booyen +27 82 774 7360  
Alan Marneweck +27 82 333 1905  
Gary Marneweck +27 83 287 4082  
Bill Bailey +27 83 656 8528

e-mail : johannesb@limpopo-limpadi.com  
alanm@limpopo-limpadi.com  
garym@limpopo-limpadi.com

Web : [www.limpopo-limpadi.com](http://www.limpopo-limpadi.com)

THE ULTIMATE AFRICAN WILDERNESS